

LATEST · LIVE · LAND · FOR PEOPLE



HOUSE DESIGN 1

/ COMPACT HOUSE / MID-SIZED HOUSE / LARGE-SIZED HOUSE
/ LOFT & PENTHOUSE / TOWNHOUSE & APARTMENT HOUSE

Colunata House

Design Mario Martins Atelier **Design team** Mario Martins,
Ana Rocha, Filipa Santos, Fernanda Pereira, Rui Saavedra
Location Lagos, Portugal **Built area** 365 m², Garage - 57 m²
Completion 2011 **Photographer** Fernando Guerra



{ The house is all in white. It is a southern house, and as such the light is intense. It is this light, with its strong, distinct shadows, that gives colour and meaning to the white that covers the building. The strong presence of water and the landscaping surrounding the area accentuate the tranquility of the place. In the central terrace, the main space of the house, where the privacy is felt and where the horizon is predominant. It is around this terrace that the functional organisation of the house is structured, on one floor. There are five bedrooms with bathrooms and a large living room which leads to the kitchen. The garage, technical and service areas ensure the smooth running of the house. }

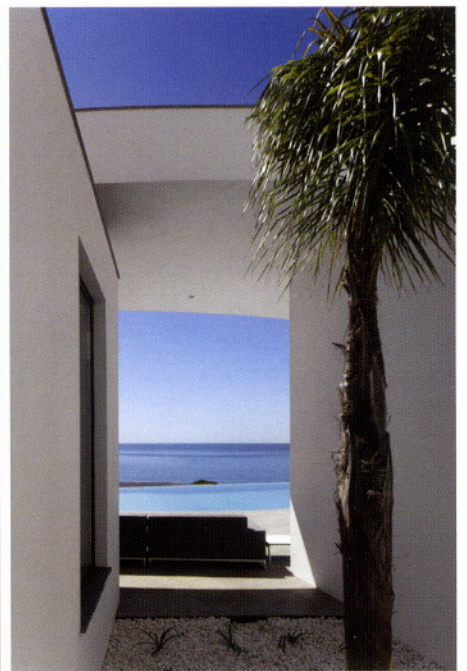
Text by Mario Martins Atelier

Mario Martins was born in Lagos, Algarve, Portugal in 1964. He graduated from the University of Architecture of Lisbon (Faculdade de Arquitectura da Universidade Técnica de Lisboa) in 1988. After working in Lisbon, he has worked in Lagos since 1989 in his architectural office, Mario Martins - Atelier de Arquitectura, Lda, where he has designed public sector buildings, tourist developments and private houses mainly for the south of Portugal. His work over these 20 years has featured in various publications, and has been referred to in the media and at conferences.



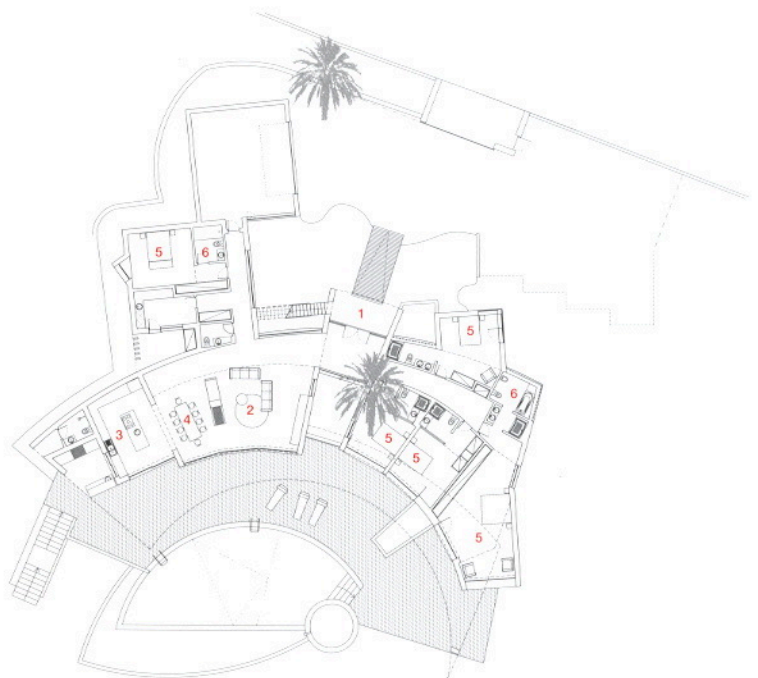








- 1 ENTRANCE
- 2 LIVING ROOM
- 3 KITCHEN
- 4 DINING ROOM
- 5 BEDROOM
- 6 BATHROOM



FLOOR PLAN

/BALMAIN /SUITE NIPTIABLE /EXTENSION
V34 /ROOMROOM /HOUSE WITH BAVES
AND AN ATTIC /DAYLIGHT HOUSE /FKI
HOUSE /3WAY HOUSE /HOUSE IN SEYA
HILL HOUSE /TOWN HOUSE /BARCODE
HOUSE /STUDIO GT SP /MISHIMA HOUSE /
HOUSE IN TAKANANOBABA /DUNE HOUSE
/LIGHT STAGE HOUSE /HOUSE WITH EMPTY
LOT /BILTER HOUSE /BLURRED HOUSE /
HOUSE IN GRODZISK MAZOWIECKI /PRIVATE
HOUSE IN ROME /ECO-SUSTAINABLE HOUSE
/ILMA GROVE /CLOUD NO.9 CHALET
BERANGER /RIETVELD HOUSE /RAMAT
GAN HOUSE2 /HOUSE COLLINATA /BEACH
HOUSE CN /CASA PLAYA LAS PALMERAS /
NACL RESIDENCE /SHIELD HOUSE /NIEUW
LEYDEN /MATHI /TWISTED CABIN /PH
NEWYORK /PENTHOUSE KITZBIHEL /ULTRA
CLASSY PENTHOUSE /COLLECTOR'S LOFT
INHABITED FOLD HOUSE /APARTMENT D
/FNS APARTMENTS /APARTMENT AT BOW
DIQUARTER, LONDON /WALL-2-ALL APARTMENT
/CELIO APARTMENT /LOFT APARTMENT /
CASA DO CONTO /CETATUJA APARTMENTS
& LOFT /D APARTMENT /PARK HOUSE
KICHIJOJI MIKOS



HOUSE DESIGN 0
LATEST · LIVE · LAND · FOR PEOPLE

